



Electrolux
PROFESSIONAL

**Stainless Steel Preparation
1770 mm Stainless Steel Shelving
with 4 Solid Shelves**

ITEM # _____

MODEL # _____

NAME # _____

SIS # _____

AIA # _____



132946 (NSC1170)

Stainless steel Shelving with
4 solid shelves, 1170mm

Short Form Specification

Item No. _____

Made in stainless steel. The two intermediate shelves are height-adjustable. Load capacity per shelf: average of 150 kg/m², evenly distributed.

Construction

- Designed to bear a maximum total load of 600kg; the load can be positioned at various heights thanks to the shelves.
- Model constructed entirely in stainless steel, with solid stainless steel shelves.

APPROVAL: _____

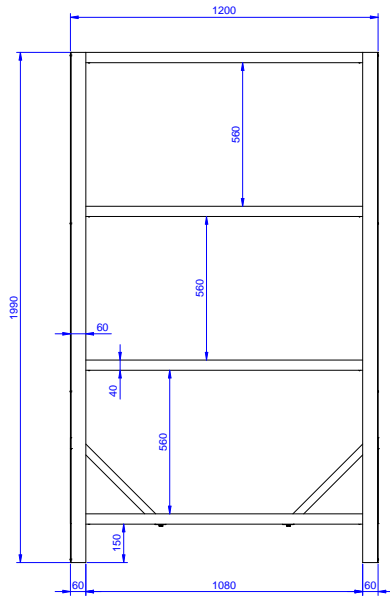


Experience the Excellence
www.electroluxprofessional.com

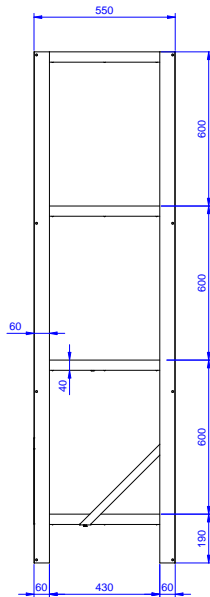


Stainless Steel Preparation 1770 mm Stainless Steel Shelving with 4 Solid Shelves

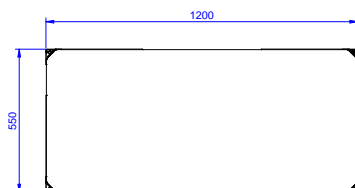
Front



Side



Top



Key Information:

| | |
|------------------------------|-----------|
| External dimensions, Width: | 1200 mm |
| 132946 (NSC1170) | 1200 mm |
| External dimensions, Depth: | 550 mm |
| External dimensions, Height: | 1990 mm |
| Max loading weight: | 600 Kg kg |
| Shelves number: | |
| Net weight: | 37 kg |